

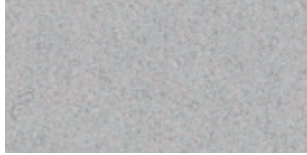


EUROPOST 2™
EUROPOST WELDED™

by Gabriel



61107



60003



61003



61004



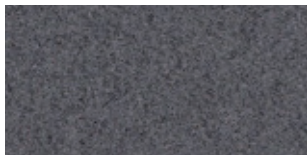
66056



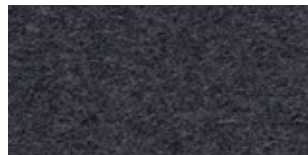
61052



61005



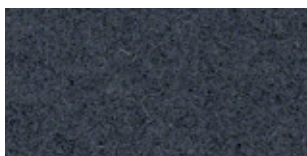
60016



60058



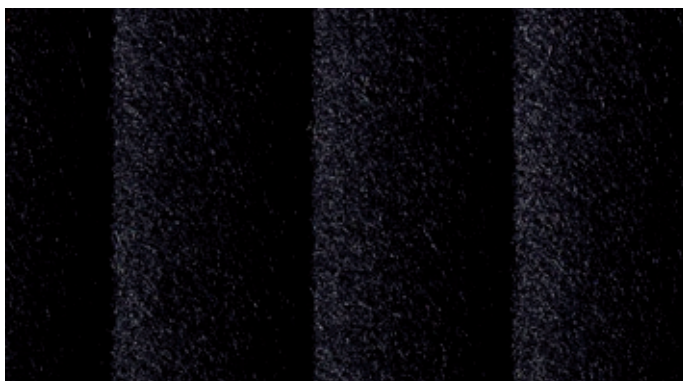
61109



60017



W40 4063 60016



W25 4073 60051



60051



60999



60000

W40 4063 60000



63016



63073



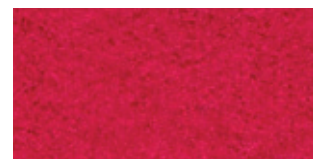
W40 4063 63072



63072



64070



64150



63004



64149



64009



63070



64068



64035



61108



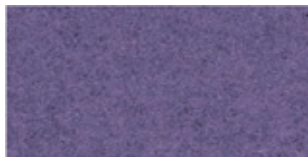
64045



65069



65072



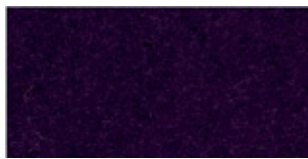
65070



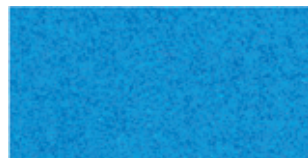
66118



67066



65071



66115



67016



W25 4073 65071



66119



66116



65072



66039



66117



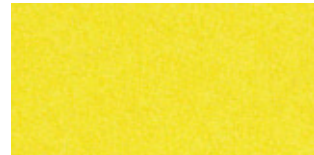
W25 4073 62061



62061



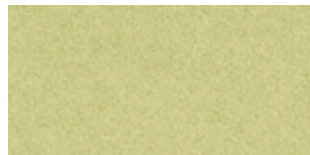
68126



62060



68035



68127



68072



68030



68128



68003

EUROPOST 2™

Design no.		1701
Fields of application		contract
Material	wools of New Zealand	100%
Weight		800 g/lm · (25,8 oz/lin. yd.)
Width		140 cm · (55")
Abrasion resistance	rubs · BS EN 14465 · BS EN ISO 12947-2 (Martindale)	50,000
Pilling	scale 1-5, max 5 · EN ISO 12945-2	4
Colour fastness to light	scale 1-8, max 8 · EN ISO 105 - B02	5-7
Colour fastness to rubbing	scale 1-5, max 5 · EN ISO 105x12 (wet/dry)	4-5
Maintenance	dry cleaning	P(S)
Flammability	EN 1021 1&2 · BS 5852 0&1 · CAL 117 · UNI 9175 Class 1 I Emme · CA TB 117-2013 · Önorm B3825 B13800 Q1 · IMO MSC 307(88) Annex 1 part 8 · MED certificate IMO · ASTM E 84 Will also pass other flammability standards. Flame retardant performance is dependent upon the foam used.	
US ACT	<ul style="list-style-type: none"> ☀ AATCC 16 Light fastness ☪ AATCC 8 or 116 wet/dry crocking 🔥 California Bulletin CAL 117-E Class 1 · CA TB 117-2013 · ASTM E 84 	<ul style="list-style-type: none"> pass pass pass
Design/Colours	Gabriel Design Team / Cenk Kivrikoglu	
Subject to changes and colour differences		



EUROPOST WELDED™

Design no.		40631701 · 40731701
Fields of application		contract
Material	wools of New Zealand	100%
Design	40631701 = 40 mm stripe / 40731701 = 25 mm stripe	
Foam	polyurethane	
Backing	polyester backing	
Weight	W:40 = 1143 g/lm · (36,87 oz/lin. yd.) / W:25 = 1184 g/ lm · (38,19 oz/lin. yd.)	
Width	138 cm · (54.33")	
Maintenance	vacuum cleaning	
Design/Colours	Gabriel Design Team / Mette Mikkelsen	
Subject to changes and colour differences		

